



PSYCHOPEDIA

== LEARN TRAIN HEAL ==

JUNE'23 - JUNE'24



MASTERS ENTRANCE EXAM
PROSPECTUS

Master (MA/M.Sc.) in Psychology

Master of Arts/ Science in Psychology is a Post Graduate degree in Psychology.

The duration of the course is of two years with 4 semesters in total.

The master's degree in Psychology includes various specializations to choose from like Clinical Psychology, Counselling Psychology, Industrial Psychology, Neuropsychology, Development Psychology, Educational Psychology, Forensic Psychology, and Social Psychology.

With the increasing demand for psychology-related services in hospitals, schools, organizations, NGOs, etc. the job prospects in each of these fields are on the rise, especially with the increasing emphasis on the need for professionals due to the declining mental health of people all around the world.

Course Type: Postgraduate

Course Duration: 2 years

Course Eligibility: Bachelor's degree in Psychology or Non-Psychology background (accepted by some colleges) from an accredited college/university with a minimum of 50% aggregate.



Why join Psychopedia?

Psychopedia follows a highly personalized approach in assisting each of its students to get into the college of their preference.

The students are guided and mentored at each step of their journey with us.

University-specific entrance exam coaching with customized notes, test series, and presentations along with updates on the admission forms, important dates, exam pattern, and syllabus. Teachers at Psychopedia play varied roles from being your guide, teacher, and counselor to your friend in need of the hour.

We take immense pride in calling our team your **'Academic Parents'** as we always strive to provide that homely and open atmosphere for our students to learn, question, and find suitable solutions for their curiosities.

A Regular class at Psychopedia

Classes at Psychopedia are held online from Monday to Friday, including extra classes time to time, making it flexible for anyone to join from anywhere they are placed.

All the essential resource material is provided to the student pre, during, and post the classes. Students are expected to maintain attendance at their classes.

Our teachers are highly approachable for any relevant query to be solved via text, mail, or on-call within the given time frame.

We highly respect the work time boundaries of our team members and expect our students to do so as well.

Syllabus:

1. Stress
2. Learning- classical conditioning, operant conditioning Observational learning
3. Motivation
4. Memory, Forgetting
5. Abnormal disorders - Schizophrenia, mood disorders, anxiety disorders, somatoform disorders, dissociative disorders, personality disorders, eating disorders, childhood disorders, DSM 4TR & 5.
6. Eye & Ear – structure, functions, and theories.
7. Perception- form, depth, and space. Consistency.
8. Social psychology- social influence (compliance, conformity, obedience), Attribution theories, social facilitation, aggression, prosocial behavior, prejudice, stereotype, group thinking, group polarization, group cohesiveness, socialization, elaboration, likelihood model, Latane Darley, model, excitation transfer theory, Hawthorne effect.
9. Brain structure, function, and Brain mechanism
10. Psychotherapies – psychodynamic, humanistic, cognitive, behavioral, Gestalt.
11. Developmental Psychology – Piaget, Kohlberg, Eric Erickson, Uric, Bronfenbrenner theory, Lev Vygotsky.
12. Statistics- validity, Reliability, Correlation, NPC, ANOVA, parametric & non-parametric, variables, Hypothesis, frequency distribution measures of variables, scales of measurement, Type 1 and type 2 errors.
13. Hunger, Thirst, Sleep & Language
14. Neuron – Structure and theories. Neurotransmitters, their functions, related diseases, and disabilities.
15. Organizational psychology, HRM and leadership styles.
16. Emotions and its theories.
17. Thinking & concepts & language & problem solving.
18. Intelligence, theories, tests.
19. Personality, theories, tests.
20. History of psychology

21. Psychophysics (Types & Signal Detection Theory)
22. Neo Substance disorder
23. Research methods – Research step
 - Co- relation Case studies Survey
 - Experimentation Export factor
 - Ethno
 - Observation
24. Longitudinal/ cross sectional studies
25. Sampling techniques
26. Social Perception and cognition
27. Attitude – formation, Measurement – Thurstone, likert, attitude change – cognitive dissonance, scales of measurement.
28. Ethics
29. Neuropsychology
30. Counselling psychology
31. Attention & Theories
32. 11th & 12th NCERTs
33. Basics of Positive Psychology
34. Expert lectures focused on your specialization (Clinical, Counselling, Psych oncology, Neuropsychology, Industrial Psychology and so on)

If anything is important for the exam but we missed it for syllabus, we will cover it

Resource material provided to you:

- **Comprehensive notes** – customized personal notes, e-books, and textbooks covering all the topics required for the entrance exam.
- **Regular tests and assessments** – a range of tests and assessments are prepared for you to measure the progress of each student. Previous year's question papers and MCQs for each topic are created as per the syllabus and student requirements.
- **Mock tests** – students are encouraged to mandatorily sit for the mock tests designed carefully to assist them before the entrance exams.
- **Revision classes** – frequent revision classes are scheduled for students to help them catch up with their queries and topics.
- **College selection assistance** – personal assistance to help the students choose their college of dreams along with admission alerts on dates, forms availability, syllabus, and exam patterns.

We take immense pride in having our Psychopedians in the following reputed colleges across India



Rashmi Dange

MSc (Psychology-HRDM) with MA (Business and Organisational Psychology) [Steinbeis, Germany] , Christ university Bangalore



Harshita Rajtu

Msc in clinical psychology Jain university, Bangalore



Surbhi Dhawan

Msc Counselling Psychology Christ University Delhi NCR



Muskaan

Msc neuropsychology | Christ University, Bangalore



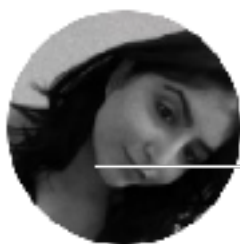
Aditi Rawat

Msc Counselling psychology Kristu Jayanti College



Prarthana Rehan

MSc Clinical Psychology, Christ University, Central Campus, Bangalore



Isha Bhardwaj

MSc Clinical Psychology, Christ Delhi NCR



Simran

MSc Psychology HRDM, Bangalore, Christ



Shreya Bhandare

Kristu jayanti, Bangalore



Nishi Adhana

Msc Clinical Psychology, Christ University, Yeshwantpur Campus, Bangalore



Satvik

Kristu Jayanti



Muskan Rana

Christ University Yeshwantpur campus



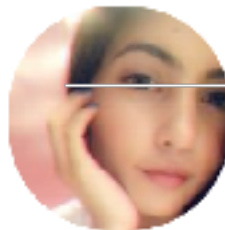
Khayati - Christ, Bangalore



Mehak Gupta - Delhi, NCR



Muskan Kharbanda - Delhi, NCR



Pariksha Thakur - Christ, Bangalore



Shivansh - Christ, Delhi NCR



Tanvi Minhas - Christ, Delhi NCR



Vanya - Christ University



Neha Rana - Jain University, Bangalore



Srishti Tandon - Christ University, NCR



Anchal Thakur - Christ, Delhi NCR



Smriti Saini - IIT Gandhinagar



Aadrita Borah - Christ, Delhi
NCR



Yashasvi - Jain University,
Bangalore



AARTI - Christ, NCR



Shubhangi Poddar - CHRIST,
NCR



Stuti Kashyap - Mount
Carmel, Bangalore



Prachee Jain - Jain
University, Bangalore



Jennifer Mazumder - Jain
University, Bangalore



Vipasha - Delhi University



Asmita Sharma - Jain
University, Bangalore



Amardeep Kaur - Jain
University, Bangalore



Sakshi sharma - Msc
Clinical Psychology



Aarushi Saluja - MSc.
Clinical Psycho-Oncology
Christ, Bangalore

For more information visit our website:
<https://psychopedia.in/>

Contact us on
9988366750

Join the Psychopedians in one of the reputed colleges!