



# PSYCHOPEEDIA

== LEARN | TRAIN | HEAL ==

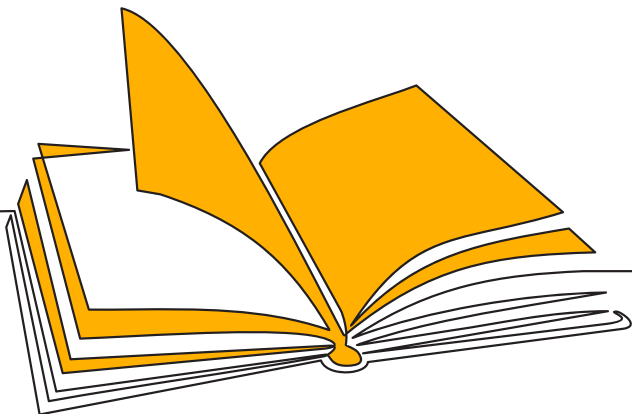
JUNE'23 - JUNE'24

Psychopedia Coaching institute Prospectus



# ABOUT US

PSYCHOPEDIA is a venture started by then 23 years old (2015) young Psychology Professional, **Aashna Narula**. The study centre(now online) combines her love for teaching & psychology. Psychopedia is not just limited to the coaching, we bring all three elements together which is **Learn, Train & Heal**, by giving best Psychology coaching, Training students in Research & healing through our new venture, **TheMentalHealthWorld**. Through Psychopedia we have also tried to break the norms that just believe that institutes have to just stick to what the syllabus is all about, we give them real life examples, we help them in their career guidance, we are there for them as their family. Parents have a faith in us and that is the reason we have been working so hard.



# WHY PSYCHOPEDIA?

As Benjamin Franklin rightly puts it, "Tell me & I forget, teach me & I may remember, involve me & I learn" .

We, at Psychopedia involve students in the learning process.

Our aim is not to just teach students but activate curiosity, wisdom, knowledge and bring out the best in them. In the classroom, our students are valued, listened to and respected. We are not just their teachers, we are their guides as well as their counselors.

We strongly believe that influence of a good teacher can never be erased. We are not here to tell, explain or demonstrate, we are here to inspire them, help them gain insight and develop love for learning.

We are passionate, hard working, compassionate team and we believe in our students.

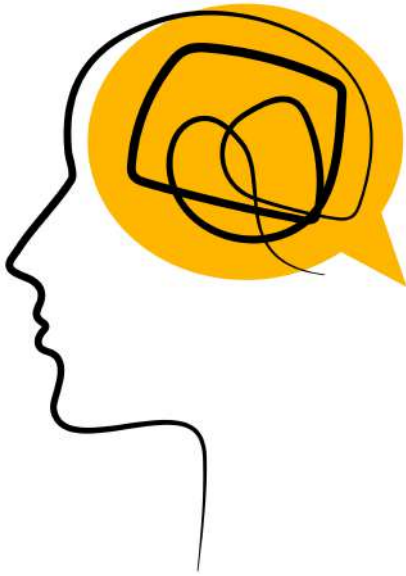
We are not here just to help them get good grades but also help them succeed in their lives.



# FACILITIES

- **Comprehensive notes** : Customized personal notes and test books for psychology entrance exams and other courses will provide students with valuable content insight into the study of psychology.
- **Self assessment** : students will be imbued with skills to venture into self analysis of tests and study productivity
- **Regular test/assessments**: students will be asked to prepare and perform various range of regular tests and assessments to keep a check on progress of the students.
- **Mock tests**: students preparing for psychology entrances will mandatorily have to sit for the online mock tests before their entrance exams to help them stay in line with their dreams and strengthen their weakness
- **Regular classes**: classes at psychopedia are held via online mode and students are required to maintain regularity so as to fulfill their aspiration of achieving an excellent score.
- **Revisions**: frequent revision lectures are held to assist students with queries





# WHAT SETS PSYCHOPEDIA APART FROM OTHER COACHING INSTITUTES?

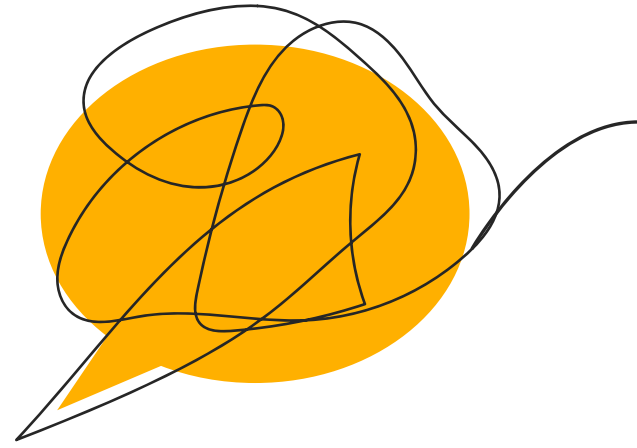
Psychopedia has an extremely homely atmosphere. We proclaim ourselves as your child's Academic Parents, ensuring he/she is comfortable and highly motivated as soon as he/she steps on this journey.

The staff and professionals at Psychopedia are utterly amicable and totally approachable at any given point in time.

Psychopedia believes in a personalized approach towards student guidance, ensuring that the students are corrected and guided at every step and are duly informed about their progress.

Psychopedia is known for the quality of its teachers and their remarkable content delivery skills.

# SERVICES PROVIDED



## HIGH SCHOOL

We impart coaching to students from CBSE board: Grade 11th and 12th.

## UNDERGRADUATE

We impart coaching to students studying Psychology at Bachelors level: First year, Second year, Third year & Psychology honours.

## POSTGRADUATE

We impart coaching to students studying Psychology at Masters level: First year and Second year, as well as Mphil and PhD.

## GRE PSYCHOLOGY

We impart coaching to students wanting to prepare for graduate record examination subjective psychology test.

## AP PSYCHOLOGY

We impart coaching to students wanting to study Psychology at AP level .

Students will be helped with reviewing SOP and research project.

## RESEARCH TRAINING

A two month certificate training program in psychological research, where students gain a firm foundation in research process and writing research papers.

- Student will commit to writing an empirical paper and a review paper.
- Students will receive a completion certificate.
- LOR will be provided if asked for.

## CAREER COACHING

We guide students for their future endeavours in the field of psychology.

## ENTRANCE EXAMS

We provide students with the best coaching for cracking entrance exams

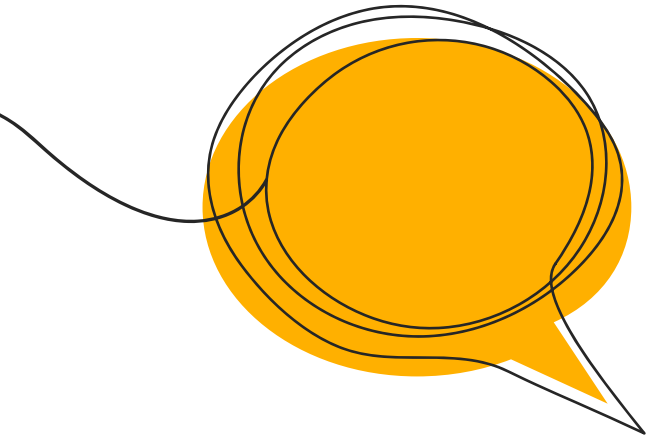
UGC NET JRF

University specific masters entrance.

Mphil

GATE

PhD Entrance

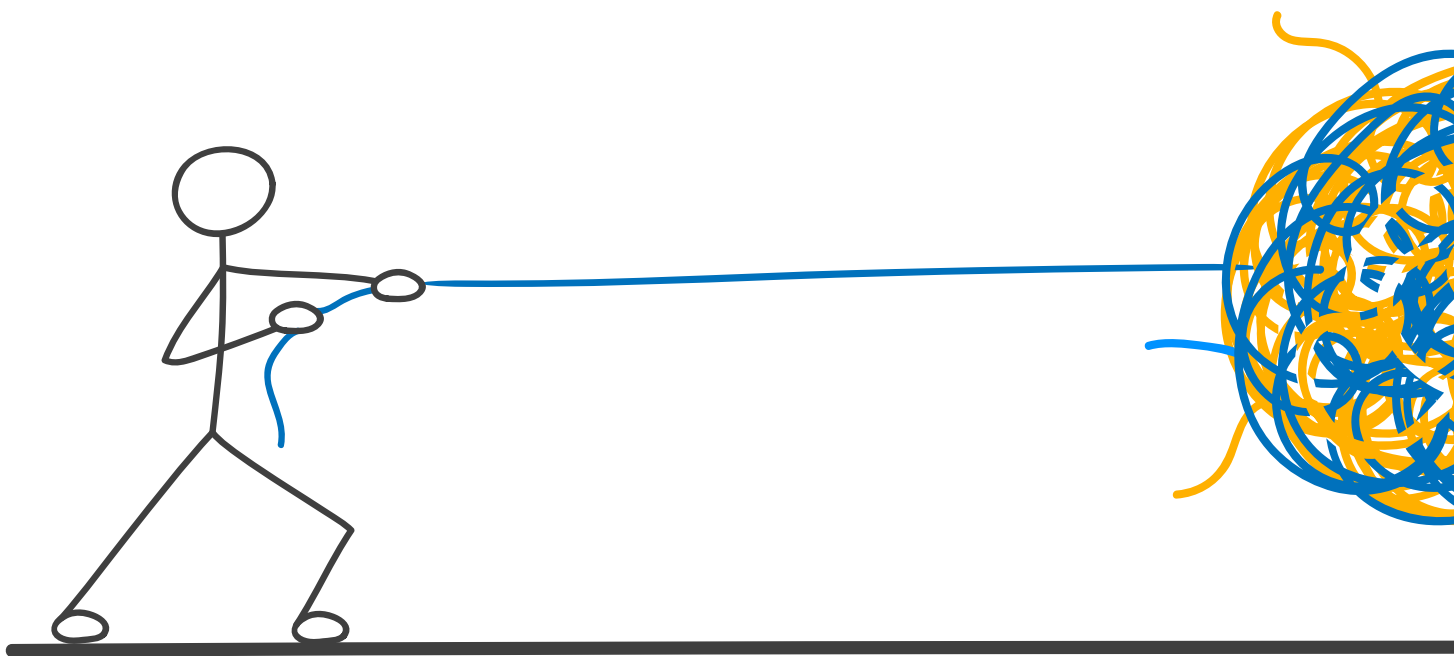


# FEE STRUCTURE

| <b>COURSE</b>                      | <b>FEES</b>                     |
|------------------------------------|---------------------------------|
| Highschool (11th & 12th)           | 3500 per month                  |
| Undergraduate                      | Depends on Syllabus             |
| Postgraduate                       | Depends on Syllabus             |
| GRE Psychology                     | 25,000                          |
| AP Psychology                      | 25,000                          |
| MA / Mphil / NET / GATE            | 20,000                          |
| PhD entrance                       | 10,000                          |
| 2 months research training program | 6,000                           |
| Career coaching                    | 1,000 per hour                  |
| Asetrix                            | Fees is accepted in Installment |

## TO BE NOTED

We kindly request students to join a batch only when they are ready and decide to commit their time fully to the course they wish to enrol in. We at Psychopedia believe in prioritising students to open communication hours with facilitator, also keeping a liberal approach toward collection of fees. We take immense effort to facilitate our students with the best of learning and study materials.





# THANK YOU



psychopedialth



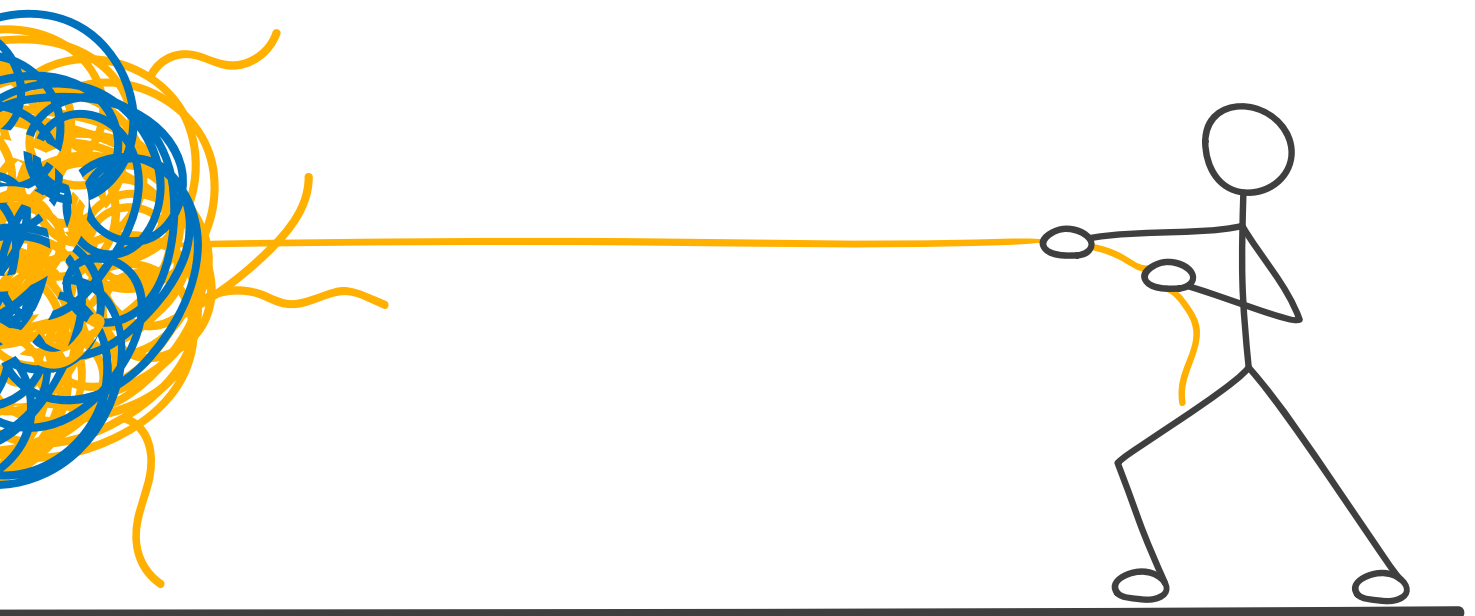
psychopedia



+91 99883 66750



[www.psychopedia.in](http://www.psychopedia.in)





# SUCCESS STORIES

## NTA-NET JRF



Aman - NET



Ambika- NET



Jaya- NET



Nidhi- NET



Priya- NET



Priyanka - PhD Entrance



Ritika- NET



Sanskriti- NET



Snehil- NET- JRF



Tanya- NET- JRF



Purva Singh - NTA JR



Ishanpreet Kaur Toor -  
NTA JRF

## GATE 2021



Bhavya Lalit – ALL INDIA  
RANK (8)



Purva Singh – ALL INDIA  
RANK (68)

## GATE 2022



Niyati- ALL INDIA RANK (25)



Smriti- ALL INDIA RANK (63)



Nidhi- ALL INDIA RANK (63)

## PhD Entrance



Nidhi Khurana

Professional Diploma in Clinical  
Psychology Univeristy of Jaipur



Nidhi Jain

Ph.D. Entrance Panjab University



Aryavani

GNDU Ph.D. Entrance 2021



Sanam Raj

Ph.D. Entrance Panjabi University, Patiala

## MPHIL



Niyati - Mphil Clinical Psychology,  
Amity University

## AP Psychology



Anika - AP PSYCHOLOGY 4/5 score

## Masters Entrance



Rashmi Dange

MSc (Psychology-HRDM) with MA (Business and  
Organisational Psychology) [Steinbeis, Germany], Christ  
university Bangalore



Harshita Rajtu

Msc in clinical psychology Jain university, Bangalore



Muskaan

Msc neuropsychology | Christ University, Bangalore



Aditi Rawat

Msc Counselling psychology Krishna Jayanti College



Surbhi Dhowan

Msc Counselling Psychology Christ University Delhi NCR



Prarthana Rehan

MSc Clinical Psychology, Christ University, Central  
Campus, Bangalore



Nishi Adhona

Msc Clinical Psychology, Christ University, Yeshwantpur Campus, Bangalore



Satvik

Kristu Jyothi



Muskan Rana

Christ University Yeshwantpur campus



Khayati - Christ, Bangalore



Mehak Gupta - Delhi, NCR



Muskan Kharbanda - Delhi, NCR



Pariksha Thakur - Christ, Bangalore



Shivansh - Christ, Delhi NCR



Tanvi Minhas - Christ, Delhi NCR



Vanya - Christ University



Smriti Saini - IIT Gandhinagar



Sriшти Tandon - Christ University, NCR



Neha Rana - Jain University, Bangalore



Anchal Thakur - Christ, Delhi NCR



Shubhangi Poddar - CHRIST, NCR



AARTI - Christ, NCR



Aadrita Borah - Christ, Delhi NCR



Prachee Jain - Jain University, Bangalore



Yashasvi - Jain University, Bangalore



Stuti Kashyap - Mount Carmel, Bangalore



Jennifer Mazumder - Jain University, Bangalore



Vipasha - Delhi University



Asmita Sharma - Jain University, Bangalore



Amardeep Kaur - Jain University, Bangalore



Sakshi Sharma - Msc Clinical Psychology



Shreya Dhandare  
Kristu Jayanti, Bangalore



Simran  
MSc Psychology HRDM, Bangalore, Christ



Aarushi Saluja - MSc. Clinical Psycho-Oncology  
Christ, Bangalore



Isha Bhardwaj  
MSc Clinical Psychology, Christ Delhi NCR

## CBSE 2021 results



Dhruv Gupta

St. Kabir School Psychology Score: 73/100



Dipra Gulati

Carmel Convent School Psychology Score:  
93/100

---

## CBSE 2020 results



Sahaj Jhinga

Carmel Convent School Psychology  
94/100



Saira Sekhon

Psychology: 89 Socio : 87 Carmel Convent  
School, Chd



Vriti Gulati

Carmel convent School, Chd Psychology  
score: 84



Tanya

Socio: 83 Psychology: 81 St. kabir Public  
School



## CBSE 2019 results



**Nishtha**

100/100 Carmel Convent School,  
Chandigarh



**Zoya**

95/100 - Carmel Convent School,  
Chandigarh



**kimreet**

95/100 - St. Kabir School, Chandigarh



**Shanvi**

90/100 - Carmel Convent School,  
Chandigarh



**Samridhi**

90/100 - Carmel Convent School,  
Chandigarh

## ICSE 12th 2020 results



**Sejal**

Strawberry fields high school, Chandigarh  
Psychology-98



**Gurbaaz Singh**

Yadavindra Public School Mohali  
Psychology-92

# THE MENTAL HEALTH WORLD



**Aashna Narula**  
*Entrepreneur &  
Psychology Professional*

I started Psychopedia a Psychology Coaching Institute in 2015, when I was just 23. Over the years we have done a lot in the field of Psychology as teachers & mentors.

We made sure to create a safe space for our students. Forward to 2022, we know how the pandemic affected our mental health but it wasn't just the pandemic, it's our everyday life, we struggle in.

The whole purpose of building "The Mental Health World" is to come together and care for our mental health & help each other in process.